



# ~~ABC Simple~~

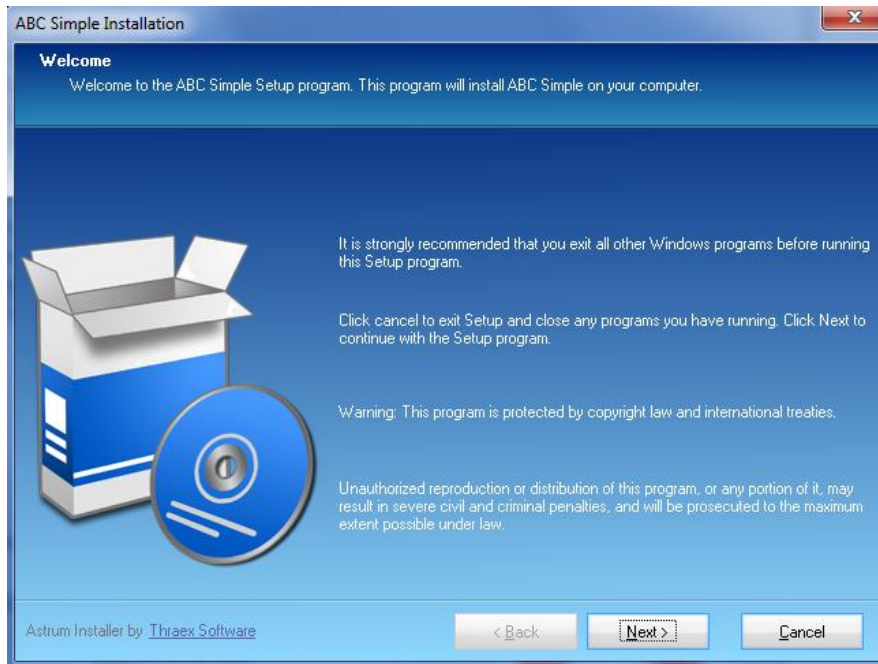
## ***Minimum System Requirements***

Please ensure your system meets the following minimum requirements before trying to install ABC Simple:

- Desktop Requirements
  - 1 GHz 32-bit (x86) or 64-bit (x64) processor
  - Microsoft Windows XP, Vista, or 7
  - 200 MB available hard disk space
  - 512 MB RAM
  - Please set your “Desktop Resolution” to 1024 x 768 or higher. While the software will work at lower resolutions it will require the operator to use the scroll bars more than necessary.
  - Microsoft Access 2007 is required for full reporting functionality, but basic functionality is available without any version of Office being installed.
- Handheld Requirements
  - 520 MHz ARM Processor or faster
  - Windows CE 5 or higher, Windows Mobile 5 or higher
  - 128 MB available hard disk space
  - 128 MB RAM
  - USB Cable Connection
- Other Requirements
  - The desktop PC will require Active Sync 4.5 or later (Mobile Device Center on Vista/Win7)
  - If Office is installed on the PC, please ensure that the latest service packs for Microsoft Office are installed as well
  - Docking station or Data cable (USB type) for handheld synchronization and program loading
- Optional Requirements
  - We have tested and guarantee compatibility with the following label printers: [Zebra TLP 2824](#), but in general most Zebra **ELP** format label printers will work.

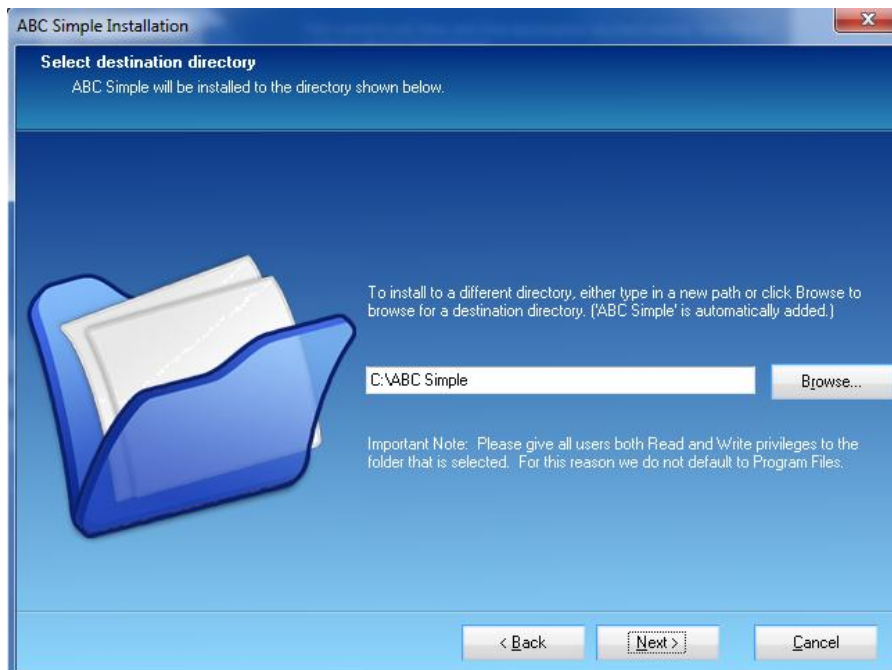
## Installation Guide

1. Close any open programs running on your PC
2. Double click on the Application Installation file named ABC Simple'XXX'.EXE where XXX is the version. This may be on a CD from American Barcode or a downloaded file saved to your computer from the internet.
3. This will launch the installation wizard shown below:



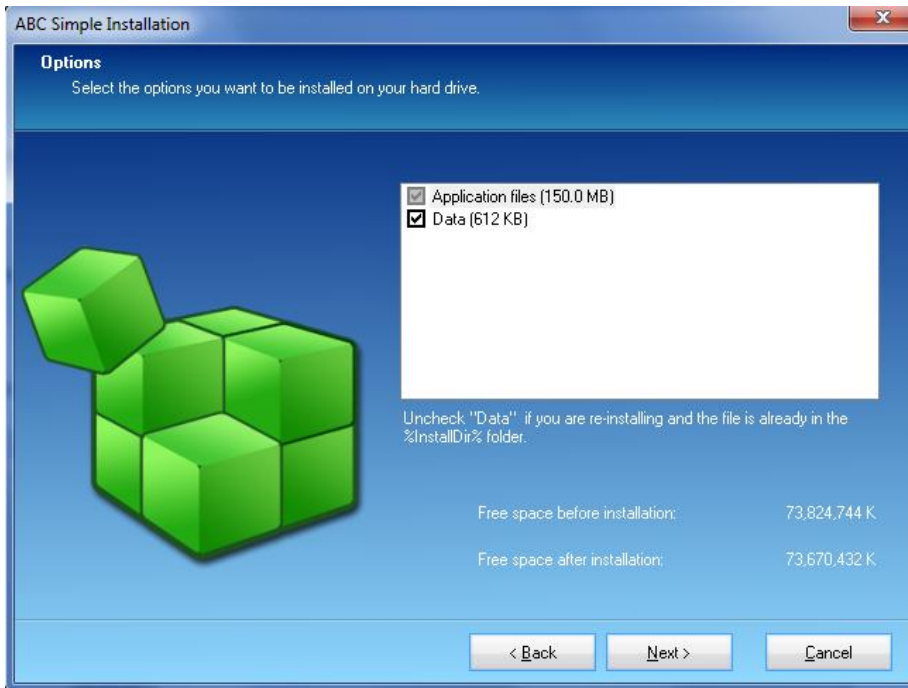
a.

4. Click the "Next" button to continue and then please ensure that the green security key provided with the software is NOT plugged in to your USB port.
5. Click the "Next" button and then let the wizard know what directory to install ABC Simple in:



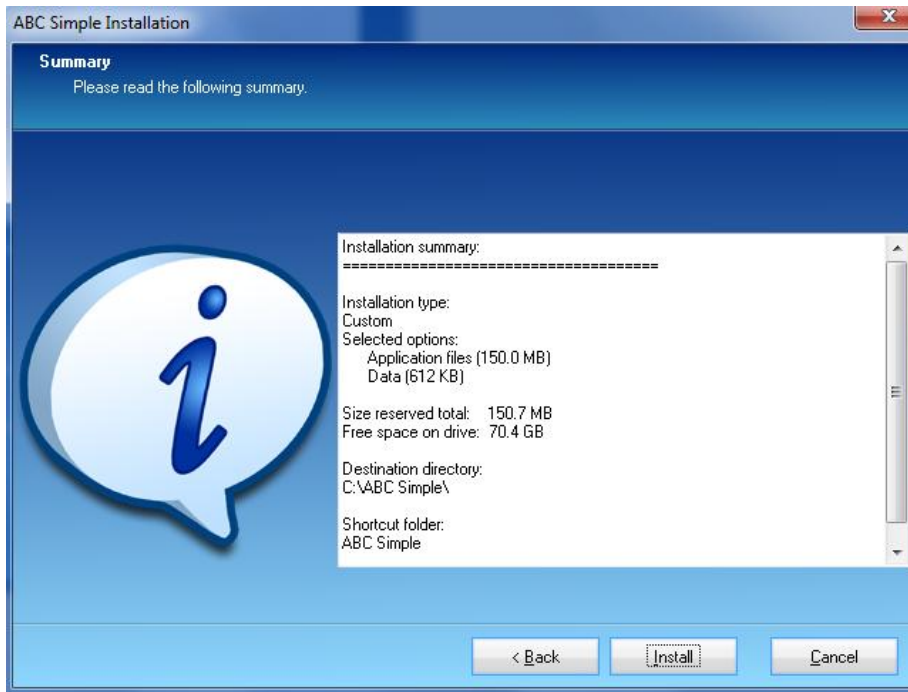
a.

6. Click the "Next" button and ensure that the check box for the Data file is checked as shown below:



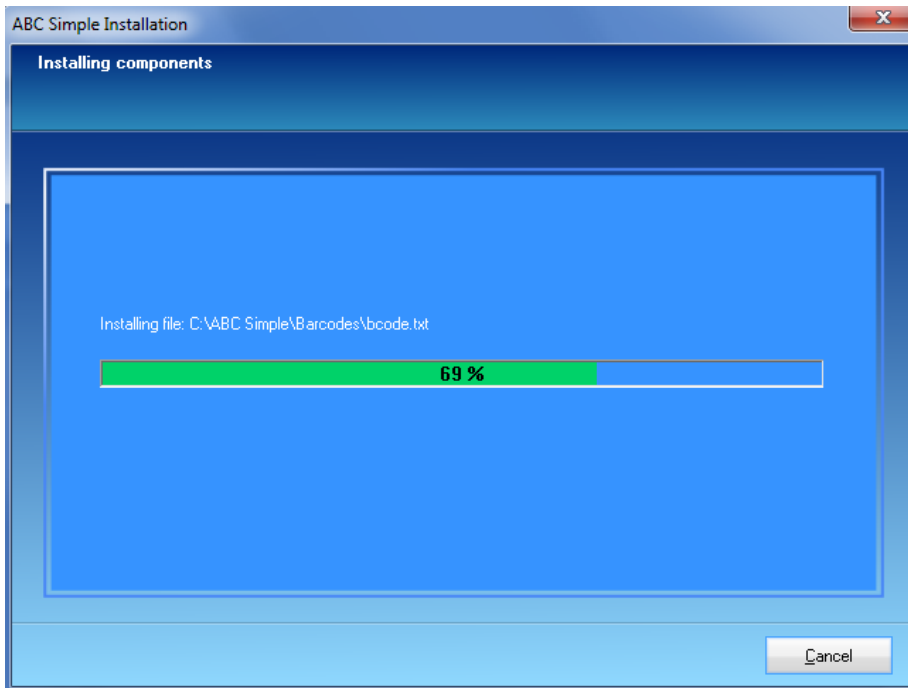
a.

7. Click the "Next" button one more time and review the installation summary then on the "Install" button on the screen shown below to begin the installation:



a.

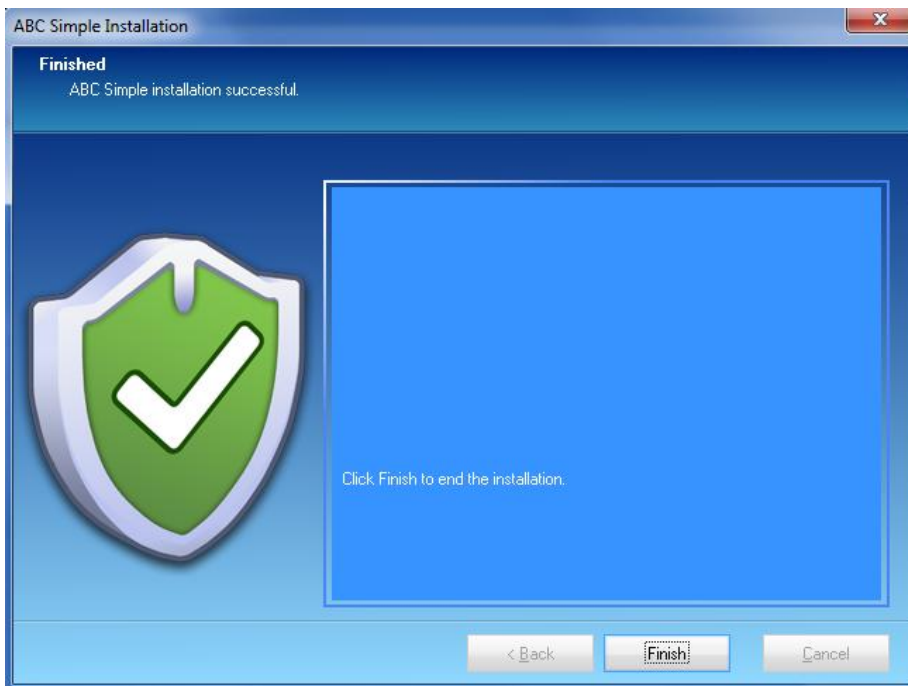
8. You will then see the files being installed:



a.

9. If Windows warns you about drivers, please tell it to install them anyway.

10. Finally, click on the "Finish" button to complete the installation:



a.

11. This completes the installation procedure for the workstation. For details on installing the program on the handheld scanner and for configuration and operating instructions please launch the software on your workstation and press the F1 key to launch the in program help file.